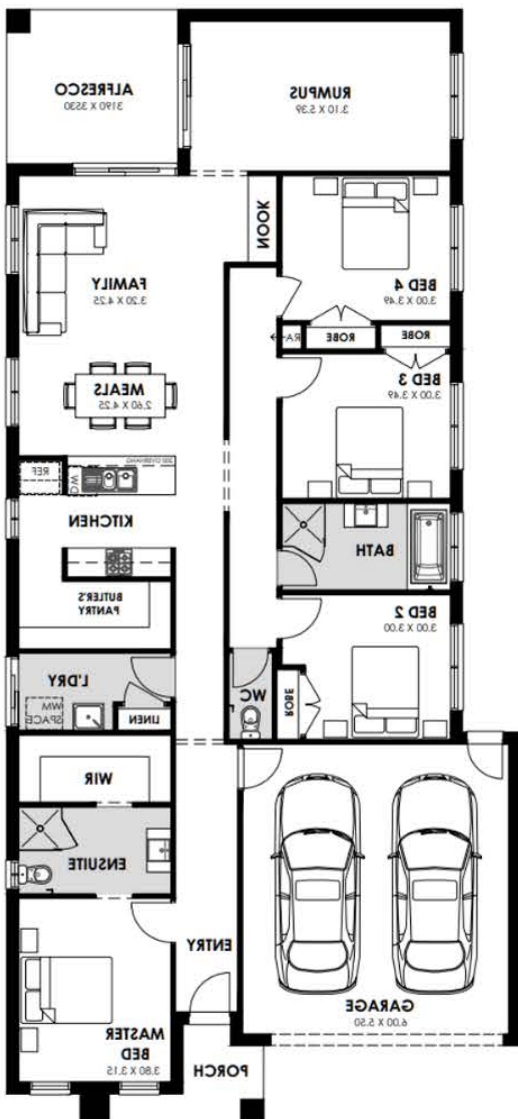


FIXED PRICE | FULL TURN-KEY | LANDSCAPED House & Land Package



Richmond 23 (Barwon Facade) 4 Bed | 2 Living | StudyNook | Alfresco



\$762,127



SUE WILSON
PROPERTY

**Lot 64 (400m²) Jenkins St
Werribee - GRANGE ESTATE**

- Fixed Site Costs & FULL TURN-KEY
- Stone Benchtops
- LED Downlights
- Butlers Pantry, Rumpus, Study Nook, Alfresco
- Increased Ceiling Height
- 900mm Appliances + Dishwasher
- Window Furnishings & Timber Laminate Flooring
- Ducted Heating & Split System Cooling to Family
- Landscaped Front/Rear Gardens
- Colour Concrete Driveway & Front Porch
- Fencing to Sides/Rear + Wing Fence & Gate
- Clothesline, Letterbox, Brick Infills
- Flyscreens & Flydoors

Contact Sue Wilson

0418 387 295

www.suewilsonproperty.com.au

